

1 NO POVERTY

Are there fewer people living in poverty now than there were 25 years ago?

- a) No, 1 billion more people are now living in poverty
- b) Yes, 1 billion people have been lifted out of poverty



2 ZERO HUNGER

True or false: The number of starving people in the world is decreasing.

- a) True
- b) False



3 GOOD HEALTH

Choose two things that would help stop children under 5 from dying.

- a) Nutritious Food
- b) An iPad
- c) Clean drinking water
- d) Fizzy drinks



4 QUALITY EDUCATION

True or false: Fewer girls than boys attend school worldwide.

- a) True
- b) False



5 GENDER EQUALITY

Which country was the first in the world to give women full political rights? (the right to vote and be elected)

- a) France
- b) USA
- c) Finland



6 CLEAN WATER AND SANITATION

Potable Water is:

- a) Water that is safe to drink
- b) Water that we can find in flower pots
- c) Water that looks clean



7 RENEWABLE ENERGY

What does energy efficiency mean?

- a) When a lamp gives a bright light
- b) When you can use energy without having to worry about your consumption
- c) A device or building that uses relatively little energy to provide it with the power it needs



8 DECENT WORK AND ECONOMIC GROWTH

If you have a job, does that mean you are safe from poverty?

- a) Yes, because you work to earn money;
- b) No, you can have a job and still be in poverty

(1 worker out of 7 worldwide still lives below the poverty line)



9 INDUSTRY, INNOVATION AND INFRASTRUCTURE

True or false: Everyone has access to the internet.

- a) True
- b) False

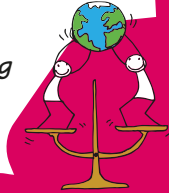


10 REDUCED INEQUALITIES

True or False: In the last 25 years, the number of people in extreme poverty has NOT gone down

- a) True
- b) False

(since 1990, the number of people living in extreme poverty has declined by more than 50 %)



11 SUSTAINABLE CITIES AND COMMUNITIES

Solutions to save energy and protect the planet already exist. Which of these are not real?

- a) Bicycles
- b) Electric buses
- c) Flying cars



12 RESPONSIBLE CONSUMPTION AND PRODUCTION

How much food is wasted every day worldwide?

- a) None
- b) One third of food produced
- c) Almost half of all food produced



13 CLIMATE ACTION

Which of the following statements is correct?

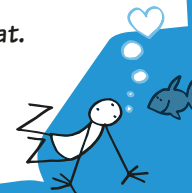
- a) Global warming doesn't exist because last winter was really cold
- b) Global warming doesn't exist because there are still global icecaps
- c) Global warming will lead to more flooding and heavy storms



14 LIFE BELOW WATER

What is overfishing?

- a) Eating too much fish and getting sick;
- b) When we take fish more fish out of the sea than can be naturally replaced;
- c) Overfeeding fish so they get fat.



15 LIFE ON LAND

True or false: Human activities are responsible for the extinction of other species.

- a) True
- b) False



16 PEACE, JUSTICE AND STRONG INSTITUTIONS

What is a child soldier?

- a) A child who plays war games with other children
- b) A child who is enrolled in an armed group
- c) Both



17 PARTNERSHIPS FOR THE GOALS

How does fairtrade contribute to the SDGs?

- a) It offers better trading conditions to producers and workers
- b) It increases profits for industries
- c) It encourages producers to hire children



SUSTAINABLE DEVELOPMENT GOALS

1 NO POVERTY

How many people are living in extreme poverty worldwide?

- a) Around 800 people
- b) Around 8,000 people
- c) Over 800 million people



2 ZERO HUNGER

How many people in the world are not eating enough to be in good health?

- a) Almost 90 people
- b) Almost 9,000 people
- c) Almost 900 million people



3 GOOD HEALTH

What is best for a newborn baby?

- a) Drinking lemonade
- b) Drinking orange juice
- c) Breastfeeding



4 QUALITY EDUCATION

Education...

- a) Will make it hard for you to get a job
- b) Will help you get a job and improve your life
- c) Is only for very smart kids



5 GENDER EQUALITY

How many countries in the world have a woman as President or Head of State?

- a) 5
- b) 20
- c) 100



6 CLEAN WATER AND SANITATION

Where does most of the wastewater resulting from human activities go?

- a) It is treated and recycled
- b) It is stored in safe places
- c) It is discharged into rivers or sea without any pollution removal



7 RENEWABLE ENERGY

Global warming happens because of an increase of a certain gas in the atmosphere. Which gas is it?

- a) Ozone
- b) Carbon
- c) Gasoline



8 DECENT WORK AND ECONOMIC GROWTH

What does "economic growth" mean?

- a) You save more money every month
- b) Prices are increasing
- c) An increase in the value of goods and services produced by a country



9 INDUSTRY, INNOVATION AND INFRASTRUCTURE

True or false: Everyone has access to electricity.

- a) True
- b) False

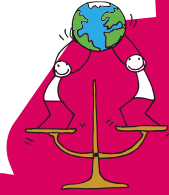
(about one third of the global population are facing difficulties in accessing electricity all of the time)



10 REDUCED INEQUALITIES

In terms of education...

- a) Girls should only learn to knit and cook
- b) Boys should only learn science and technology
- c) Girls and boys should have equal learning opportunities



11 SUSTAINABLE CITIES AND COMMUNITIES

What is renewable energy?

- a) Energy that comes from natural sources and never runs out
- b) Energy from outer space!
- c) A form of energy used by the pharaohs of Ancient Egypt



12 RESPONSIBLE CONSUMPTION AND PRODUCTION

Oil is the most polluting industry in the world. Which comes second?

- a) Coal
- b) Textile
- c) Toy



13 CLIMATE ACTION

Countries should make sure they use more:

- a) Coal and oil for energy
- b) Nuclear energy
- c) Energy from the sun, wind and waves



14 LIFE BELOW WATER

Which of the following contribute to marine pollution...

- a) Litter on the beach
- b) Jellyfish and crabs
- c) Seaweed
- d) Refusing plastic shopping bags and bringing your own reusable bags to the shops instead



15 LIFE ON LAND

Biodiversity means...

- a) The diversity of animal and plant species living on our planet
- b) The variety of healthy products you can find in your supermarket
- c) The number of planets that humans could live on



16 PEACE, JUSTICE AND STRONG INSTITUTIONS

A blue helmet is...

- a) A soldier who works for the United Nations to protect peace
- b) A firefighter in the navy
- c) A child soldier



17 PARTNERSHIPS FOR THE GOALS

What made communication among partners easier?

- a) Messenger pigeons
- b) The Internet
- c) Messages in bottles



SUSTAINABLE DEVELOPMENT GOALS

1 NO POVERTY

4 Most of the people living in poverty live in:

- a) Europe
- b) North and South America
- c) Africa and Asia



2 ZERO HUNGER

Which of these statements is true?

- a) You need at least one sweetened fizzy drink per day to stay healthy
- b) There is enough food to feed the world
- c) You can stay healthy if you don't eat vegetables and fruits



3 GOOD HEALTH

How many minutes of exercise should children between 5 and 17 do everyday?

- a) 60 minutes
- b) 30 minutes
- c) You don't need to exercise everyday



4 QUALITY EDUCATION

Who should do the cooking and cleaning in a house?

- a) The males in the house
- b) The females in the house
- c) Everyone should help out!



5 GENDER EQUALITY

How many countries in the world have a woman as President or Head of State?

- a) 5
- b) 20
- c) 100



6 CLEAN WATER AND SANITATION

Which statement is correct?

- a) More people have a mobile phone than a toilet
- b) Most people have toilets but can't afford a mobile phone
- c) Everyone has both a mobile phone and a toilet



7 RENEWABLE ENERGY

Some energy sources are renewable, why?

- a) Because they don't pollute
- b) Because they are brand new
- c) Because they can be replenished by nature in a short time



8 DECENT WORK AND ECONOMIC GROWTH

How many people are jobless worldwide?

- a) 2 million
- b) 20 million
- c) 200 million

(1 out of every 40 people in the world)



9 INDUSTRY, INNOVATION AND INFRASTRUCTURE

Which one of these innovations is the best at fighting climate change?

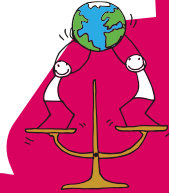
- a) An electric car
- b) A diesel car
- c) A petrol car



10 REDUCED INEQUALITIES

To reduce health inequalities all children should have access to:

- a) Clean drinking water
- b) Medical care
- c) Vaccines
- d) All of the above



11 SUSTAINABLE CITIES AND COMMUNITIES

Where is the fastest urbanisation in the world situated?

- a) Europe
- b) The United States of America
- c) In developing countries



12 RESPONSIBLE CONSUMPTION AND PRODUCTION

Plastic bags are a big problem for our environment. Which country was the first to ban plastic bags?

- a) Sweden
- b) Russia
- c) Rwanda



13 CLIMATE ACTION

Who is in charge of looking after the planet?

- a) Scientists
- b) Famous people
- c) The government
- d) Everyone



14 LIFE BELOW WATER

If we don't change our habits by 2050 there will be more plastic in the ocean than there are fish.

- a) True
- b) False



15 LIFE ON LAND

Globally, forests are...

- a) Growing, there are trees everywhere
- b) Being cut down at the same rate they are being replanted
- c) Vanishing, around half of all forests have already disappeared



16 PEACE, JUSTICE AND STRONG INSTITUTIONS

What is a refugee camp?

- a) A summer camp in the mountains
- b) A camp for the protection of people when they flee from their homes
- c) A military camp



17 PARTNERSHIPS FOR THE GOALS

What is needed to achieve the 17 sustainable development goals?

- a) The involvement of all countries
- b) The developed countries leading the change
- c) The developing countries leading the change



SUSTAINABLE DEVELOPMENT GOALS

1 NO POVERTY

In 1990, almost four people in ten (38%) lived in extreme poverty. How many people live in extreme poverty now?

- a) 10 %
- b) 30%
- c) 50%



2 ZERO HUNGER

What is malnutrition ?

- a) When you don't have a three course meal
- b) When you don't eat meat every day
- c) When you don't eat enough healthy food for a certain period of time



3 GOOD HEALTH

Which of these insects has helped to spread the disease malaria?

- a) Mosquitoes
- b) Dragonflies
- c) Glow Flies



4 QUALITY EDUCATION

What percentage of adults today are literate, meaning they can read and write?

- a) 80%
- b) 60%
- c) 30%



5 GENDER EQUALITY

What percentage of researchers in science and technology are women?

- a) 50%
- b) 30%
- c) 70%



6 CLEAN WATER AND SANITATION

What percentage of water in the world is potable?

- a) Only 3 %
- b) Half of all water, 50 %
- c) Almost all of it, 97%



7 RENEWABLE ENERGY

Which is a renewable energy source?

- a) Oil
- b) Gas
- c) Sunlight



8 DECENT WORK AND ECONOMIC GROWTH

True or false: Every adult possesses a bank account.

- a) True
- b) False

(40% of people worldwide do not have a bank account.)



9 INDUSTRY, INNOVATION AND INFRASTRUCTURE

What infrastructure is important for quality education?

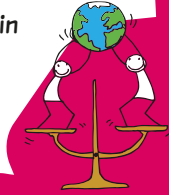
- a) Well built schools
- b) School books
- c) Internet connection
- d) All of the above



10 REDUCED INEQUALITIES

We can fight inequalities by:

- a) Making all buildings wheelchair accessible
- b) Making public transport usable for everyone
- c) Including people with disabilities in games and sports
- d) All of the above



11 SUSTAINABLE CITIES AND COMMUNITIES

In 2030 what percentage of the world's population will live in urban areas?

- a) 60%
- b) 100%
- c) 20%



12 RESPONSIBLE CONSUMPTION AND PRODUCTION

How do bees help our environment?

- a) They help plants grow and make food
- b) They do not help, they just make honey
- c) They sting mean people!



13 CLIMATE ACTION

In 2015, where did world leaders make a plan for our climate?

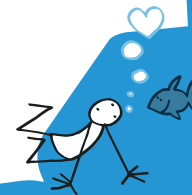
- a) Paris (Paris Agreement)
- b) London (Big Ben Agreement)
- c) New York (The Statue of Liberty Agreement)



14 LIFE BELOW WATER

Plastic bags are dangerous for turtles because sometimes they think they are:

- a) Food
- b) A toy
- c) A shell



15 LIFE ON LAND

Trees are essential because...

- a) They are a habitat for wildlife
- b) You can climb them
- c) Plastic is produced from trees



16 PEACE, JUSTICE AND STRONG INSTITUTIONS

What is child displacement?

- a) When a child goes on holiday
- b) When a child is displaced due to armed conflict
- c) When a child spends the night at a friend's home



17 PARTNERSHIPS FOR THE GOALS

Who should be involved in partnership to achieve the 17 SDGs?

- a) Citizens
- b) Governments
- c) Companies
- d) All of the above



SUSTAINABLE DEVELOPMENT GOALS