

HOPE IN ACTION

Annual Report 2017



the Jane Goodall Institute New Zealand

Contents

LETTER FROM JANE	4
LETTER FROM OUR CEO & CO-FOUNDER	6
LETTER FROM OUR BOARD CHAIR	7
OUR HISTORY	8
OUR VALUES	8
OUR GLOBAL COMMITMENTS	9
OUR STRATEGIC PLANS	9
OUR MERIT	9
OUR WORK	10
Key programmatic elements	10
- Sustainability action and advocacy	
- Youth Engagement in sustainability actions	
- Wild chimpanzee conservation	
- Conservation Science	
- Captive chimpanzee/primate wellbeing	
- Conservation of other wild apes	
OUR IMPACTS	12
Our Impact – Roots & Shoots	12
Our Impact - National Youth Leadership Council	14
Our Impact – Africa Programmes	14
Our Impact – Advocacy & Empowerment	20
OUR OUTREACH	21
OUR FAMILY	22
JANE’S NZ TOUR	23
OUR FINANCIALS	26
GREATER THAN THE SUM OF OUR PARTS	27

Our Vision

A healthy planet where people live sustainably and in harmony with animals and our shared environment.

Our Mission

The Jane Goodall Institute New Zealand exists to undertake work on global and local sustainability issues, and to inspire and empower people to take action to make the world a better place for animals, people, and the environment.

Many Hands Make Light Work

Letter From Jane

Dear Friends and Supporters

After the exciting period of establishment of the Jane Goodall Institute New Zealand it was an absolute thrill to have JGI New Zealand officially launch this year, and even more of a thrill for me personally to be present for the launch. 2017 marked the 40th anniversary of JGI and surely about time that New Zealanders joined our global movement to make positive impacts for animals, people and our shared environment.

When we started JGI, its primary goal was to continue the research at Gombe. But given the issues we see around the world and the interconnected impacts, our mission and undertakings now include programmes, projects and campaign work that encompass all elements for the benefit of all, spanning now 100 countries.

I am really thrilled with what JGI New Zealand has accomplished over the last year; you'll read the stories of the work you've helped make possible in the following pages.

For example, we are protecting great apes and millions of acres of habitat through our Conservation Action Plans; publishing scientific data from the long-term chimpanzee research at Gombe; caring for orphaned chimpanzees in our sanctuaries; working with communities to establish sustainable livelihoods; and providing scholarships to enable girls to stay in school—just to name a few.

As ever in the last year I spent nearly 300 days travelling to 27 different countries, giving lectures, attending meetings and raising awareness about the problems facing Planet Earth. I very much enjoyed coming to New Zealand this year, and was inspired by the people I met and the difference we are making in this part of the world. I continue to share my reasons for hope, that if we get

“ It is young people who are my main reason for hope. Everywhere I meet children with shining eyes wanting to tell Dr. Jane about the success of the projects they have chosen to do. ”

together and work to heal the harm inflicted, it is not too late make a positive difference. I am passionate about our Roots & Shoots programme that encourages people of all ages to take positive action that makes the world better for people, other animals and the environment. Its main message: Every individual matters and makes a difference - every day.

It is young people who are my main reason for hope. Everywhere I meet children with shining eyes wanting to tell Dr. Jane about the success of the projects they have chosen to do. Through this programme, we are having a really positive impact on attitudes around the world.

As we face the world's challenges, it is desperately important that we, as individuals and collectively, make the right choices to benefit all living things. This report is but a snapshot of our year, which was filled with so many stories of hope. Inside you can find out more about the progress of some of our many programmes around the world - programmes that we are continually refining. I am truly pleased with what we have accomplished, and even more excited about what is to come. I hope you will stay with us as this journey continues.

Thank you for caring, and for your continued support of JGI New Zealand. We could not keep doing what we do without you. Now, together, we look forward to many more years of steering Planet Earth towards a greener tomorrow, making a difference every day.

With warmest good wishes,
Dr. Jane Goodall PhD, DBE
Founder - the Jane Goodall Institute
& UN Messenger of Peace





Hope Truly in Action

CEO/Founder Report

From the inception of the Jane Goodall Institute New Zealand, like for any start-up, there has been progress, recalculations, and challenges. In the last year we have not only overcome the challenges but JGI New Zealand has flourished.

We have solid and exciting plans in place, solid infrastructure to implement our plans and a full team of talented and enthusiastic people. We have rolled out our programmes, projects and campaigns to hugely receptive responses. Individuals have been inspired to take action and organisations have partnered with us to achieve aspirational goals. We have cemented our course as an active contributor towards reaching the United Nations Sustainable Development Goals and making a difference for animals, people and the environment, locally and globally, so that we all may prosper.

It is hugely encouraging to recognise the impact that we, in partnership with others, are already having. Our Roots & Shoots programme has been taken up throughout the country and projects are already having direct impacts in communities. Through the enthusiasm of our National Youth Leadership Council and partnerships we have established the Bye Bye Plastic Bags campaign, which has contributed hugely to a now national debate, to eliminate

plastic bags in New Zealand. This is already yielding tangible benefits for animals, people and the environment.

Of course in the last year we had the ultimate highlight of a visit from Dr. Goodall. This came with increased pressure, but just as a diamond, this resulted in the most wonderful, rewarding, impactful and precious experience. Dr. Jane's declaration that she is thrilled with the impact and direction we are taking in New Zealand was certainly positive confirmation of the work we have been undertaking.

Having just returned from the Global Work Meeting for JGI, where we focused on securing Jane's legacy and ensuring optimal outcomes for JGI in the future, it is clear we have much to achieve, globally and nationally. Whilst targets are high we are confident that achieve we will, alongside our global JGI family, with individual New Zealanders, academic institutes, organisations, corporates and local and central government. 2017 was a year in which we cemented ourselves, and the team and I are incredibly energised and excited about our plans ahead.

We are making a difference every day. We look forward to you joining us on this thrilling path of turning hope into action.

Dr. Melanie Vivian
CEO & Co-Founder

What a Year It Has Been

Board Chair Report

This is a welcome opportunity to briefly pause and reflect on the journey for the Jane Goodall Institute New Zealand and the transformative year it has been.

The unquestionable highlight was Dr. Goodall's visit to New Zealand. Planning for the tour was the primary focus for many months in advance, all of which contributed to an exceptional, highly successful tour. It was inspiring to see Jane's ability to touch hearts and minds and stimulate individuals, schools, and organisations to take action in their own way. The high point of the tour was our official launch event at Te Papa, supported by Governor General Her Excellency the Right Honourable Dame Patsy Reddy and Sir David Gascoigne and Helen Clark.

Following Jane's tour the challenge has been to capitalise on the multitude of opportunities for JGINZ. We have worked hard to do so. A key element of this strategy has been to ensure sufficient organisational capacity. Over the last 12 months, we have grown from a small start-up to over 30 positions filled in the Institute. We warmly welcome our new staff and acknowledge the value that they are already adding to fulfil our organisational goals.

Given the leaps forward the Board has taken the opportunity to refresh our strategic plans and objectives to ensure a focused approach to our growth and the impacts we aim to realise. In doing so it was heartening to see how much has already been achieved against original planning and that in many cases we are ahead of our growth targets. We have been remarkably fortunate too that key staff have undertaken their work without salaries, in order to ensure the organisation has flourished. However, key to our sustainability is to track a pathway to salaries for our core staff.

I want to take a moment to acknowledge our extraordinary CEO and Co-Founder, Dr. Melanie Vivian. None of what JGI New Zealand has achieved would have been, without her tireless determination, strategic thinking and ambition for the difference JGI can make.

Melanie draws her inspiration from Jane's determination to help others make a difference. But Melanie's own efforts are inspiring, and mirror Jane's drive and vision that working together we can achieve more than we can alone, and that conversation and stories will move us all faster forward. Her clarity of purpose and determination to succeed is the driving force behind JGI New Zealand and the Board thanks and acknowledges Melanie for all she does.

I am humbled and proud of where we have come to in the last year and of the difference we are already making. But the environmental, conservation and societal challenges we face nationally and internationally are significant and daunting. However JGI New Zealand is now well placed to work towards our vision, in partnership with others, to make a difference for animals, people and the environment and to inspire others to make positive impacts in their own lives.

I look forward to the next year with excitement and hope.

Dr. Neil Gilbert
Board Chair



Our History

Dr. Jane Goodall DBE, world-renowned ethologist, humanitarian, conservationist and UN Messenger of Peace, founded the Jane Goodall Institute in 1977. We now have offices in 35 countries around the world. The Jane Goodall Institute New Zealand (JGI NZ) was founded in 2014 and officially launched in 2017, with Dr. Jane in attendance.

The vision and mission of the Jane Goodall Institute resonates nationally. New Zealanders value the natural environment and wildlife, and have a can-do attitude to providing practical solutions. New Zealanders also have a deep appreciation and awareness of other environments and cultures, as well as international conservation and sustainability challenges, and the drive to make a difference for the benefit of all.

Our Values

Respect

Empowerment

Learning

Integrity

Collaboration

Openness

Responsiveness

Our Global Commitments

Although JGINZ is one of the youngest Chapters, we are fast becoming an influential Chapter in the global JGI family. As in previous years, we supported a representative to join the annual Roots & Shoots gathering at Windsor Castle in the UK. This month our CEO joined our global counterparts at the JGI Global Working Meeting in Austria to discuss how we best plan and act to ensure the legacy of Dr. Jane Goodall. We are working towards strengthening our network structure and work so that we have optimal achievements and secure long term sustainability for our important worldwide projects.

Our Strategic Plan

Our strategic plans are evolving through three phases: establishment, consolidation and flourish. We have gone through our establishment phase and are now consolidating on all that has been put in place. Gaining outreach and involvement in our programmes, projects and campaigns is our top priority. JGI New Zealand intends to be a leading change maker in New Zealand, and globally, bringing about positive social and environmental impacts, promoting sustainable development ideals and initiatives, and educating and inspiring New Zealanders to effect their own impacts. What might this look like? We're thinking big. We're thinking of a place of learning where we can educate our educators and young New Zealanders in order for all to achieve the ultimate outcomes. Watch this space.

Our Strategic Elements

- Educate and raise awareness
- Empower New Zealanders to take action and make a difference
- Facilitate New Zealand based programme and campaigns
- Facilitate support to JGI global programmes and projects
- Organisational sustainability
- Actively contribute to the UN Sustainable Development Goals.

Our Merit

- Founded by well known and respected environmentalist and UN messenger of peace. Dr. Goodall brings credibility, prestige, connections and strong branding.
- A global network of activities, outcomes and change-makers.
- A focus on empowering individuals and groups to take their own actions.
- Well-developed programmes and resources, being utilised for decades in 100 countries around the globe.
- A track record of evidence of impacts in many countries around the world.
- Programmes linked directly to the UNSDGs, providing a robust, internationally recognised framework for all that we do.

Our Work

Growing Sustainability: Our Holistic Approach

Dr. Goodall's starting point in making a difference in the world was with the chimpanzees of Gombe. She soon discovered if we are all to ensure a sustainable future for our closest relatives, other animals, people and the environment, we need to put communities at the heart of sustainable development. Our commitment to Dr. Goodall's pioneering vision of "local conservation solutions for local conservation challenges" has been instrumental in shaping our sustainable, bottom-up approach that directly benefits people as well as wildlife. The philosophy of JGI is centred on the interconnectedness of Animals, People and the Environment (APE). JGI New Zealand advances Dr. Goodall's holistic approach through six programmatic areas that bring the power of a community-centred and interconnected approach to life.

Key Programmatic Areas

SUSTAINABILITY ACTION AND ADVOCACY

The United Nations Sustainable Development Goals map out 17 areas of work and targets that the global community need to meet to ensure sustainable futures for animals, people and the environment. JGI undertakes projects that directly impact all of the Sustainability Development Goals and are actively contributing to working towards the SDG targets.

When Dr. Jane speaks, people listen. At JGINZ we use our voice to speak up on the issues that matter for the long-term wellbeing of humans, other animals and the planet we share. Our campaigns work on local and global sustainability issues, advocating individual, corporate and policy changes for the benefit of all.

YOUTH ENGAGEMENT IN SUSTAINABILITY ACTIONS

Roots & Shoots

JGI's global youth leadership programme, Roots & Shoots, is flourishing in 100 countries. Through Roots & Shoots, participants identify and address issues in their communities, while becoming the passionate leaders our planet needs.

Gender, Health & Conservation

We empower young women through education, and by providing healthcare and clean water. Equipped with these tools, they can create a better future for themselves, their families and the environment.

Promoting Sustainable Livelihoods

We work with communities living in or near chimpanzee habitat to launch alternative livelihood projects that improve their incomes and their capacity to take care of natural resources.

Promoting Sustainable Actions

JGINZ works to educate and support individuals, organisations and government to make changes towards leading more sustainable lives.

JGINZ's Roots & Shoots programme empowers New Zealanders and equips them with the tools, motivation and support they need to address the issues that matter most to them. We create an ever-expanding network of Kiwis, connected with their global counterparts, who are inspired to be change-making global citizens.

WILD CHIMPANZEE CONSERVATION

Chimpanzees were of course Dr. Goodall's starting point in making a difference in the world. As such their care remains central to the work of JGI as the only conservation organisation focused on protecting chimpanzees. Our goal is to ensure the ecological and cultural diversity of chimpanzees is conserved in viable populations across their entire indigenous range by 2044. JGI's Africa programme has a 10-year roadmap for our Africa-based teams as they prioritise, monitor and apply lessons learned to refine our 30-year strategy.

Protecting Great Apes

At JGI's Tchimpounga Sanctuary in the Republic of Congo and in areas across Tanzania, Uganda, DRC, Congo and Senegal, JGI works to protect chimpanzees against disease transmission, illegal hunting and poaching, and human-wildlife conflict.

JGINZ supports the projects in Africa via fundraising, education and advocacy on the issues and policy change in country.

Ensuring Healthy Habitats

We work with local communities and governmental and organisational partners to develop and implement conservation action plans for key chimpanzee habitat to support the genetic and cultural diversity of chimpanzees in the wild.

JGINZ supports the projects in Africa via funding, education and advocacy on the issues and policy change in country.

CONSERVATION SCIENCE

Primate Research

Building on Dr. Goodall's pioneering research at Gombe Stream Research Centre, we continue to learn about wild chimpanzee populations and lead groundbreaking research on other primates at the sites across the chimpanzee range.

Using Science and Technology for Conservation

We use the latest technologies to solve some of the world's toughest conservation challenges. These tools enable us to monitor habitat suitability, track the movement of primates, and monitor human impact on critical habitats.

CAPTIVE CHIMPANZEE/PRIMATE WELLBEING

JGI advocates for best practice for the care of captive chimpanzees and other primates. Primates are in captivity in zoos and laboratories, and are used in the entertainment and pet industry. JGI helps communities and facilities, through direct action, policy change and education, to improve outcomes for captive primates.

CONSERVATION OF OTHER WILD APES

JGI also undertakes work towards supporting other Great Ape species. Through protection from direct threats to ensuring healthy habitats are maintained.

Our Impacts

3.4 million

acres of chimp habitat conserved across Africa

482

scientific papers and graduate theses published through research at Gombe Stream Research Centre

290

chimpanzees and gorillas receiving care in a sanctuary managed or supported by the Jane Goodall Institute

130

engaged African communities involved in programmes led by the Jane Goodall Institute

18,400

people have access to clean water

7,000

boys and girls in DRC attend new schools

100,000

people in DRC benefited from new health clinics

5,800+

projects by Roots & Shoots members from 100 countries around the globe

Our Impact – Roots & Shoots

Jane Goodall's Roots & Shoots programme builds on Dr. Jane's legacy and vision of placing the power and responsibility for creating solutions to challenges in the hands of individuals and particularly young people of all ages. We celebrated the truly remarkable successes that our 700,000+ people taking actions within our programme have achieved in now 100 countries. We also marked this milestone year by setting our course for the future: to grow an entire generation of compassionate leaders across the planet.

Growing Compassionate Leaders

Today, choices made by indifferent leaders have led to climate change, violence, educational and socio-economic inequities, and a lack of civil discourse. These problems are destroying the natural world that sustains us. They cost money, lives, and worst of all, hope. In order to change the world, leaders need to change the way they make decisions. This calls for a different type of leader with the skills and traits to make the right decisions for a better world. Roots & Shoots is answering the call.

The Roots & Shoots compassionate leadership strategy is being woven into everything we do. Together with partnering schools and organisations, and online at rootsandshoots.org.nz, we help young people learn by doing, to become compassionate leaders. First, they connect to the global Roots & Shoots network and Dr. Goodall's message of hope. Next, they either choose to participate in one of our existing campaigns, or create their own project by mapping their communities to identify local needs. With the guidance of their teachers or other adult mentors, they take action to address the issues they care about most. When the project is complete, they measure their impact and celebrate their success on our projects page.

With each step, individuals are putting compassionate leadership into practice: introspection, acting with purpose, critical thinking, empathy, open collaboration and communication, 'team player' spirit, peer influence, hope and optimism, adaptability and resilience. They become the compassionate leaders the world needs to make the right decisions for people, animals and the environment.

- Appointed new Regional Coordinators, giving R&S representation in 4 centres in NZ.
- Welcomed 9 new Youth Leaders to the National Youth Leadership Council
- Participated in activities around New Zealand
- Engaged students, schools and partner organisations around New Zealand
- Developed new education resources for R&S and our campaigns
- Held R&S events involving students and educators across cities during Dr. Jane's New Zealand Tour
- Secured funding to launch a Mini Grants programme to support R&S projects
- Established collaborations with partners across New Zealand which see R&S embedded within their education programmes.
- Contributed to the UN's Sustainable Development Goals through every R&S project



Our Impact - National Youth Leadership Council

The JGINZ National Youth Leadership Council (NYLC) was created in 2017 and is made up of a passionate group of young people from around New Zealand who are dedicated to making positive change happen for animals, people, and the environment. Members of the NYLC are the youth voice of Roots & Shoots New Zealand and work to further Dr. Jane's mission to place the power and responsibility for creating solutions to big challenges in the hands of individuals.

“Through Roots & Shoots, I have grown up hearing Jane Goodall's message that ‘each one of us can make a difference’. Now my goal is to inspire other youth to join us in actively creating a kind, peaceful and sustainable world where we value all living things.”

Achievements & Highlights

- Actively planned and participated in key events during Jane's 2017 tour
- Participated in global Roots & Shoots campaigns, including Peace Day
- Connected with Youth Leaders from other Roots & Shoots countries
- Spoke at a range of schools, events and conferences
- Undertook the Bye Bye Plastic Bag campaign, and gathered signatures for a palm oil labelling petition
- Partnered with groups such as New Zealand zoos, other non-profits, and corporates.

Our Impact – Africa Programmes

JGI's ten-country Africa Programmes Strategy, finalised in FY17, will create a step change, encompassing the majority of the world's wild chimpanzee population.

As wild chimpanzee populations continue to be threatened by habitat loss, hunting, poaching, and disease transmission, JGI's latest Africa Programmes Strategy brings together the scope and scale to save our closest living relatives from extinction. It advances our founder's vision and capitalises on JGI's strength, experience and partnerships gained from our decades of work in the chimpanzee range. The result is a roadmap for our Africa-based teams as they prioritise, monitor and apply lessons learnt to refine our 30-year strategy.

Throughout our programmes, we embrace the Open Standards for the Practice of Conservation, which instills best practices and common standards into our work and makes it easy for partners to join forces with us. We work with diverse partners to increase our sphere of influence among stakeholders, fill in the gaps where needed, eliminate duplicate efforts, and broaden the network of actors who will ensure that conservation successes are sustainable over generations. JGI's capacity to bring people together is central to delivering the highest impact with every dollar we put into our conservation efforts.



Tchimpounga

JGI opened the Tchimpounga Chimpanzee Rehabilitation Centre in 1992 to care for injured and orphaned chimpanzees confiscated from the black market, which is fuelled by a lack of economic opportunities in the region.

JGI contributes to the local economy through sanctuary employment and purchasing local food and supplies. We also use funds raised by our chapters for billboard campaigns to raise awareness about Great Apes and illegal hunting. We are pleased to report a decline in commercial hunting and trade in the area and fewer chimpanzees are being brought to the sanctuary.

Still, more than 150 chimpanzees are currently cared for at Tchimpounga.

In 1999, the Government of Congo officially gazetted three islands to JGI to become dedicated chimpanzee reserves, where up to 120 chimpanzees will be able to roam in near-free conditions. Since that time, we have been working toward the transition of chimpanzees from the original Tchimpounga site on the mainland, to our island sanctuary sites. Our JGI staff and caregivers have been

working on this process for a very long time, selecting chimpanzees that are good candidates for the transfer. Individuals have been observed in their daily life and in their relationships with others. Over this period, many have been transferred to the islands of Tchibebe and Ngombe, and now, a final group is being taken to Tchindzoulou Island.

We are thrilled to report that so far the chimpanzees are thriving in their new homes. With the numbers on the islands increasing, new arrivals create a more and more complex group with an intriguing hierarchy. The JGI team has observed that the great male Chivanga is dominant on Tchindzoulou and the female with the highest status is Wounda. You may remember Wounda from her gorgeous moment with Jane!

The new island habitats will ensure that Tchimpounga's many residents have the space and freedom to live an enriched life in the jungle with a large social group, thanks to the support of our Chimp Guardians. We are also finalising the infrastructure to allow visitors to the islands, which will assist in raising awareness of conservation concerns and offset operating costs.

Our goal: To ensure that the ecological and cultural diversity of chimpanzees is conserved in viable populations across their entire indigenous range by 2044.



Gombe

Along with supporting the amazing and ground breaking research that continues Jane's legacy today at Gombe Stream Research Centres, we are working to provide funding to Gombe to support the Gombe Housing Revitalisation project for staff and researchers. The plan covers housing at three Gombe sites: Mitumba, Kasakela and Bwavi with housing for up to 50 workers.

- Reduce the number of housing units
- Sustainable use of resources
- Increase the distance to Lake Tanganyika
- Reduce the impacts on wildlife, their habitat and the forest
- Respect the scenic aspect
- Use renewable energy

The goals of the infrastructure revitalisation are to:

- Replace outdated and dilapidated housing stock, with environmentally responsive and appropriate dwellings

As we move towards the 60th anniversary of research at Gombe in 2020, we expect to increase our commitment to funding this project.

Community Conservation

At JGI we recognise that successful conservation strategies must include local communities as true partners. Working in villages located near chimpanzee habitat, our projects improve the lives of local people while simultaneously saving wildlife. Increasing women and girls' access to education and appropriate reproductive health messages improves their socio-economic prospects and reduces the pressure on natural resources by enabling them to pursue alternative livelihoods to land-intensive and unsustainable agricultural practices.



Peer-to-Peer Education Project

Since 2008, the Peer Education Project has trained 732 peer educators on sexual reproductive health, including HIV/AIDS and other sexually transmitted infections, menstruation, and pregnancy as well as life-planning skills. These peer educators have mentored 8,444 girls, helping thousands to stay in school. More than 700 girls have returned.

732

peer educators
trained

8,444

girls mentored,
helping thousands
to stay in school

700+

girls have returned
to school after
dropping out

Strong Girls, Strong Communities

In northern Uganda, where eight out of ten girls drop out of school due to poverty and a culture of early marriage, Keinamatsiko is beating the odds.

Kienamatsiko is only 12 but she is already a leader. Since training to be a peer educator with our Peer-to-Peer Education project, she's shown a dramatic boost in her own self-confidence. Her classmates recently elected her head prefect of their school for the 2016-17 year. And her high scholastic scores keep her on track to achieve her goal of becoming a lawyer.

Keinamatsiko has earned the trust of other girls, who come to her when they face challenges such as staying in school or have questions on topics such as menstruation. She helped a fellow student, Precious, by sharing life-planning skills and access to needed school supplies. As a result, Precious was able to complete her own primary education with high scores. Keinamatsiko credits her experience with improving the outlook for many girls in her school. "Most of the girls now know what they want due to the life skills given to them, and the discipline in our school has improved due to Peer Education."

'The girl effect'

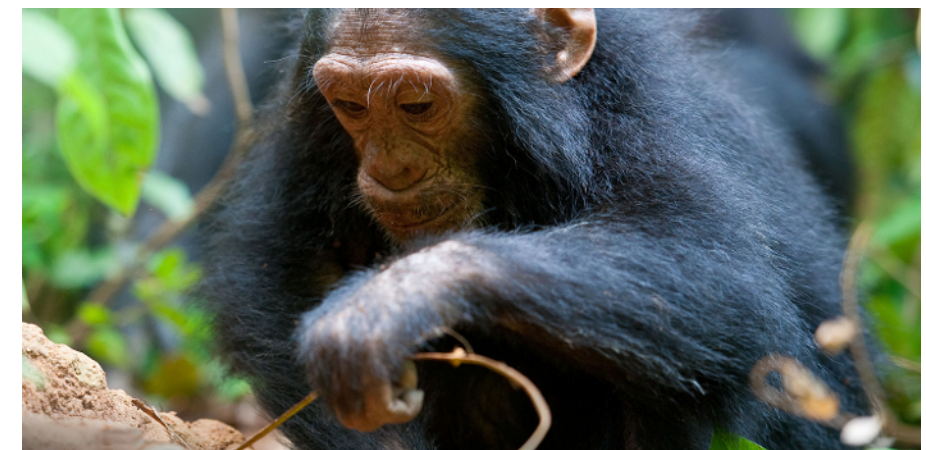
In Uganda, the barriers to female attendance in school are social and cultural as well as financial. Girls help with much of their families' household and agricultural work. They often marry and have children at a young age, with health consequences that limit education and economic wellbeing.

When girls stay in school, the entire community benefits. The correlation is so clear that it has a name: the girl effect. Every year in school improves a girl's prospects in life; it contributes to a stronger community and a stable local economy. Girls who stay in school longer tend to marry and have children later. They gain the time and maturity to make informed decisions, with more opportunities to pursue fulfilling livelihoods, including work that advances conservation. They tend to have fewer children and access more health services, such as family planning and vaccinations.

The chimpanzee connection

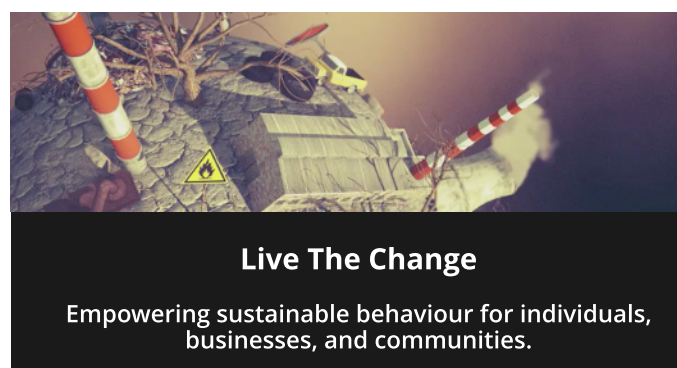
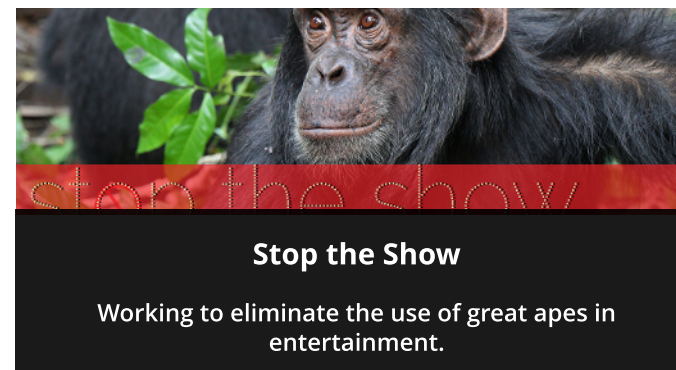
Over more than 20 years of innovation in community-centred conservation, we know that helping girls stay in school also reduces threats to chimpanzees and their habitat. Smaller families reduced the pressures of population growth, unsustainable farming practices, and rapid deforestation that threaten chimpanzee habitat and natural resources. A healthier human population reduces the risk of disease transmission between people and chimpanzees; a significant cause of chimpanzee mortality.

By expanding opportunities for girls, Peer Education is improving the lives of people, animals and the environment - not just today, but for generations to come.



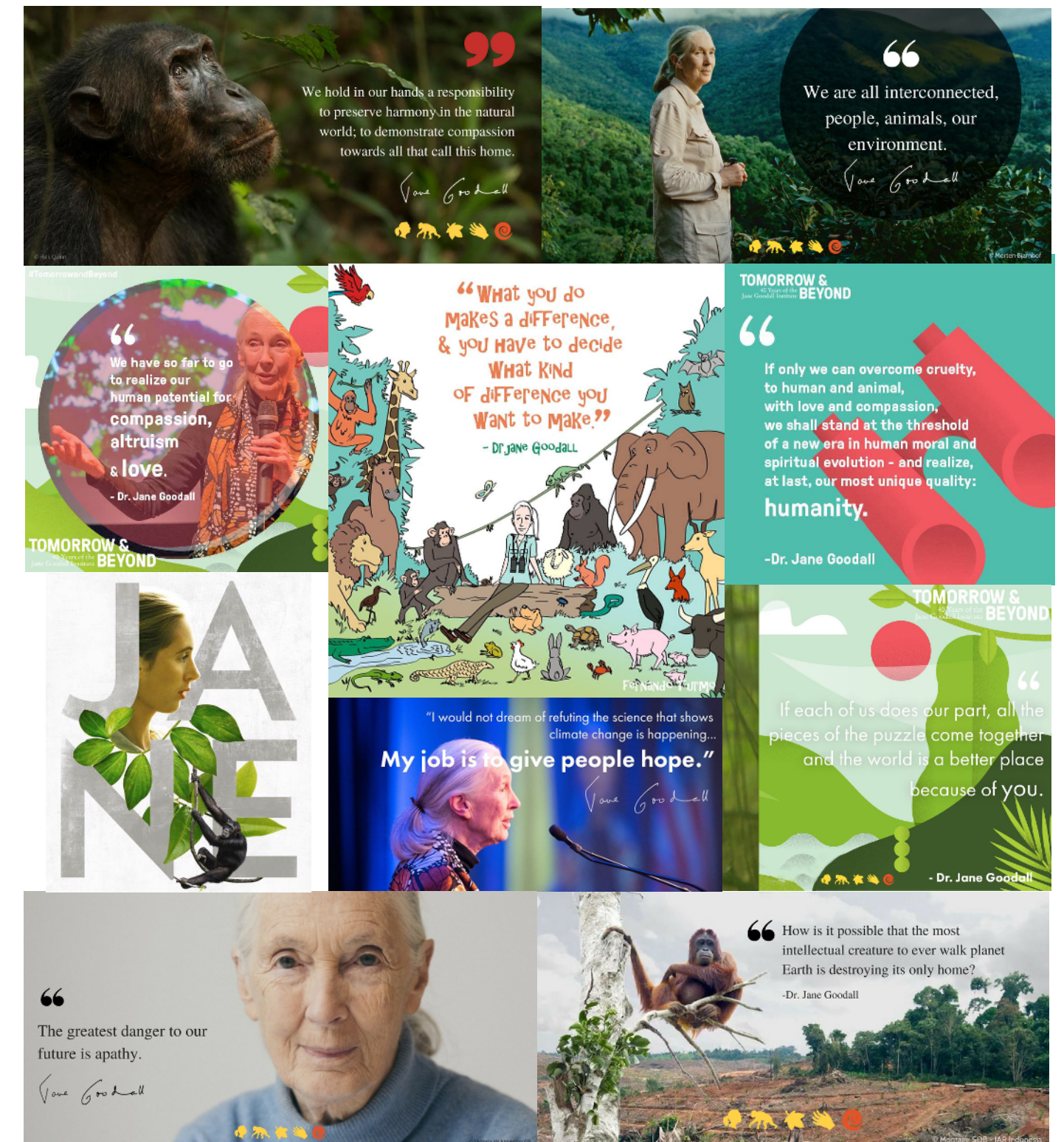
Our Impact – Advocacy & Empowerment

On our mission to undertake work on global and local sustainability issues, and to inspire and empower people to take action to make the world a better place for animals, people, and the environment - a key element to gain impact is our advocacy work. JGINZ undertakes global and local advocacy campaigns and in the last year we have achieved solid impacts across all of these actions. Engaging New Zealanders, organisations, corporations, local and central government, and seeing real behavioural changes and improved outcomes for all, and contributing to a broad range of UN SDGs.



Outreach

In 2017 we saw significant growth in awareness of JGINZ, our programmes, projects and campaigns thanks to our increased presence in New Zealand, Jane's tour, and our online presence via our website and social media platforms. In 2018 we will build on the momentum to increase awareness, inspire and provide support via resources, and connect with individuals to undertake actions, inspire positive changes in behaviour for the benefit of animal, people and the shared environment and enable fund generation to support the work of JGI. Outreach may also include an Oscar visit for Dr. Jane!



Our Family

The JGINZ team has grown exponentially in 2017 as our programmes, campaigns and activities rolled out. We have recruited talented, enthusiastic individuals ready to drive our mission. At present all members still contribute their time without any remuneration. Into the next financial year the JGINZ Board are mapping out a path to salaries that sees our team rightfully rewarded, without jeopardising growth. Dr. Jane’s tour of New Zealand, which brought with it plenty of excitement and pressure, illustrated the level of passion and dedication our team has.

Our Board



JGINZ Board with Governor General Her Excellency the Right Honourable Dame Patsy Reddy and Sir David Gascoigne.

- | | |
|--|--------------------------|
| Dr. Goodall - JGI Founder | Daniela Bigiaggio |
| Dr. Melanie Vivian – CEO & Co-Founder | Glenda Lewis |
| Dr. Neil Gilbert – Board Chair | Paul Sullivan |
| Lorraine Walmsley – Board Treasurer | Megan Sellars |

Our Key Team Members

- | | |
|--|--|
| Dr. Melanie Vivian – CEO & Co-Founder | Toby Johnson – R&S Ambassador: Mobile Recycling |
| Lianne Ferrante – Administrative Officer | Paul Erwin – Regional R&S Coordinator |
| Rebecca McQueen – HR Officer | Alice Warn-Allen – Regional R&S Coordinator |
| Rochelle Cutts - Finance Officer | Talitha Mentz – Regional R&S Coordinator |
| Rachel Rees – Supporter Relations Officer | Jacqui Gunn – Regional R&S Coordinator |
| Konny Reichert – R&S Partnerships Coordinator | Kate Dwyer – Regional R&S Coordinator |
| Jacqui Hooper – R&S Ambassador & NYLC Coordinator | Georgia Blackler – Regional R&S Coordinator |
| Fiona Gordon – R&S Ambassador: Wildlife Trafficking | Nicole Warren – Regional R&S Coordinator |

Dr. Jane’s NZ Tour

The biggest excitement of the year was of course when we welcomed Dr. Jane to our shores in June. The ‘Tomorrow & Beyond’ tour focused on turning the hope that we have for a better future for all, animals, people and the environment into action. Our aim was to provide a wide variety of events and outreach for Jane and the public.

In and of itself, Jane’s visit was highly successful. Sold out public speaking events, coupled with several smaller engagements at parliament, schools and zoos provided many people with the opportunity to engage with one of the most exceptional and inspirational conservation leaders of our time.

To deliver on this objective, we partnered with Think Inc, and Loop, for our large public events. We held large public lectures and Roots & Shoots events in Auckland, Wellington and Christchurch with our outreach partners, such as Auckland Zoo, Wellington Zoo, Orana Wildlife Park and The University of Canterbury and Student Volunteer Army. Other event partners included the NZ animal Law Association, SPCA, Akina, G

Adventures, and the Canterbury Employers Chamber of Commerce. We would like to thank all these partners for the part they played in making the tour so successful.

To spread Dr. Jane’s messages and raise awareness of JGINZ, we garnered national media coverage across numerous TV, radio and print outlets as well as a special film recording session at Weta Workshop.

For JGI New Zealand as an institute, Jane’s tour was a pivotal moment. We were privileged to be able to hold our well attended launch event at Te Papa with the generous support of the Governor General Her Excellency the Right Honourable Dame Patsy Reddy and Sir David Gascoigne. Our launch, coupled with a series of meetings Jane held with parliamentarians, business groups and societal leaders put us on the map, and established new connections and opportunities.

It was an enormous team effort from our entire JGINZ family, including staff, Board, volunteers and supporters and donors so thank you! We already can’t wait for the next visit from Jane, hopefully in 2019.



Tour Outcomes



4 cities in 10 days



20+ events – Including an address to members of the NZ parliament, to an animal law conference, and an audience of social entrepreneurs



8,000 – heard Dr. Goodall speak at public talks



14 – private meetings



4 – Roots & Shoots events, with 1000 invited teachers and school students, held with our Roots & Shoots partners



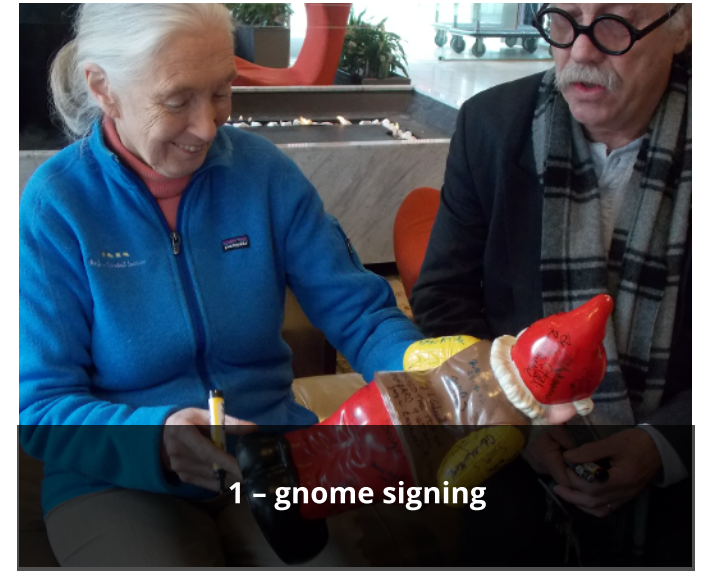
20+ - media articles and appearances



42 – relationships with external organisations fostered



1 – head cast



1 – gnome signing



1 – chance for Dr. Goodall to get out and enjoy New Zealand's natural wonders

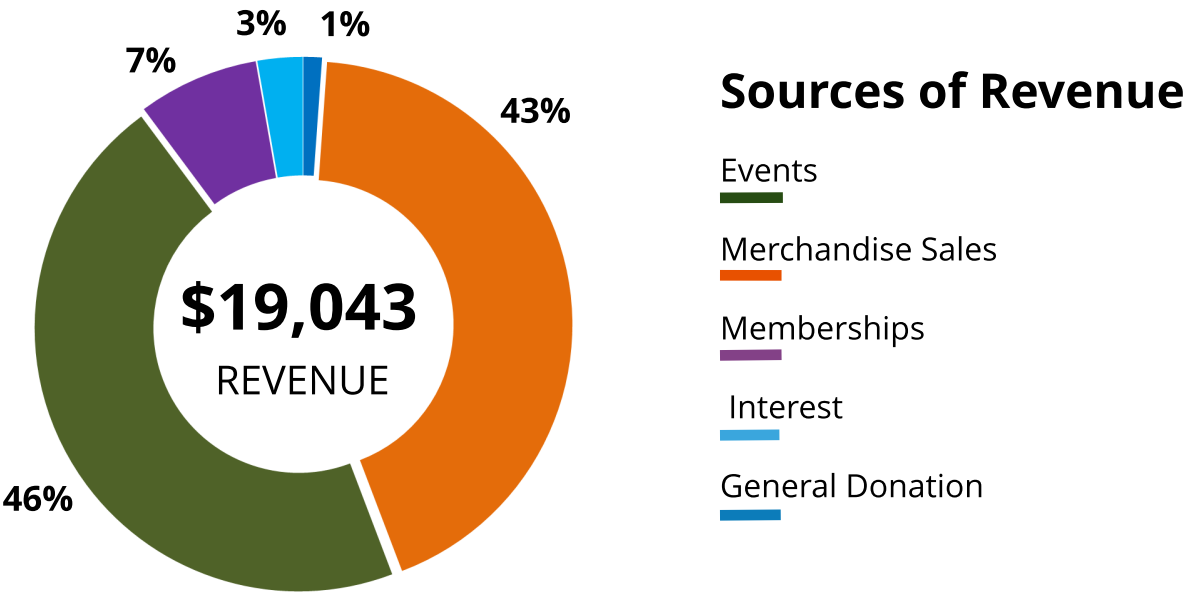


1 - incredible launch event at Te Papa Marae

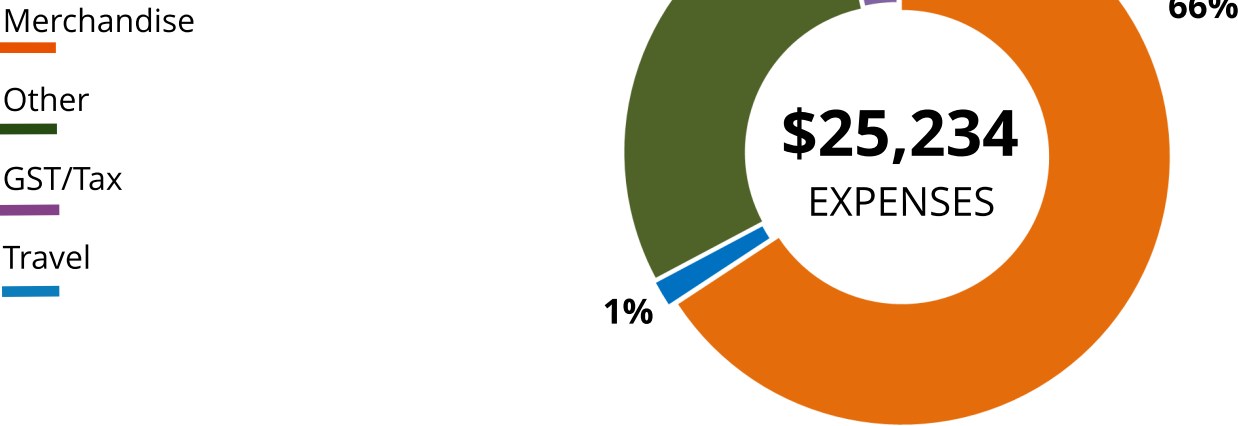
Financials

Accountability and transparency are important here at JGI. Annual reports and our financial filings give us the opportunity to share highlights from our programmes, the impact they are making and how we use the resources provided by our donors to make this work possible. We watch every expense to ensure that as much money as possible goes to on-the-ground mission-oriented programmes. We value the trust and commitment of our donors. We endeavour every day to deliver real results while maximising the impact of our donors' support. The work we do is much greater than what we can include in any single report.

It should be noted that the financial year end occurred during Dr. Jane's tour of New Zealand. As such this summary only paints part of our financial picture for 2017.



Expenses



Greater Than The Sum of Our Parts

Our Partners & Supporters

JGINZ is grateful to the individuals, organisations and businesses whose support, contributions and partnerships make change possible and drive long-term impact results making the world better for all.

Together We Can Make A Difference

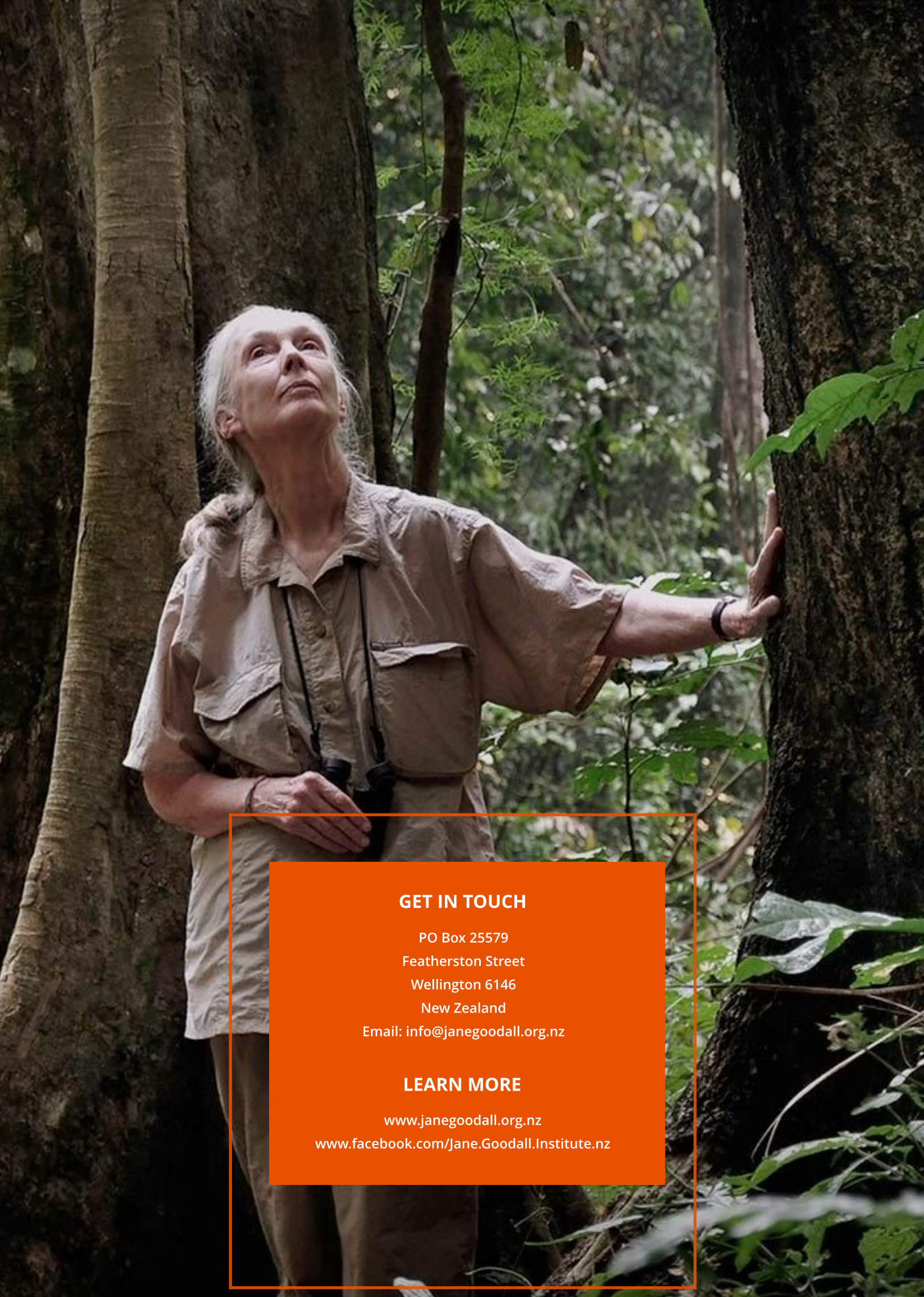
"JGINZ has two focuses in regards to New Zealanders. The first is engagement. Engaging Kiwis in our programmes and campaigns in such a way that they take direct actions to make a difference in the world.

"The second is to inspire Kiwis to contribute funds to support our programmes and projects, in New Zealand and around the world. Whether individuals are inspired by our care and rehabilitation of chimpanzees, our provision of education for girls, our projects that ensure sustainable communities, or our global education programme that supports direct action on the Sustainable Development Goals.

"These all take money and without money JGI can not continue these programmes, in New Zealand or around the world. This is why our leader, Dr. Jane, still circles the globe 300 days a year. We hope that this report and more will inspire you to turn the wonderful feeling and hope our work engenders into action, tangible, life changing action." Melanie Vivian, CEO & Co-Founder

There are many ways you can support the work of JGI New Zealand:

- 1. DONATE
- 2. MAKE A MONTHLY GIFT
- 3. BECOME A CHIMP GUARDIAN
- 4. BECOME A JGINZ MEMBER
- 5. UNDERTAKE A ROOTS & SHOOTS
- 6. BE PART OF DR. JANE'S LEGACY
- 7. PROVIDE CORPORATE SUPPORT
- 8. PROVIDE PRO BONO SUPPORT



GET IN TOUCH

PO Box 25579
Featherston Street
Wellington 6146
New Zealand
Email: info@janegoodall.org.nz

LEARN MORE

www.janegoodall.org.nz
www.facebook.com/Jane.Goodall.Institute.nz